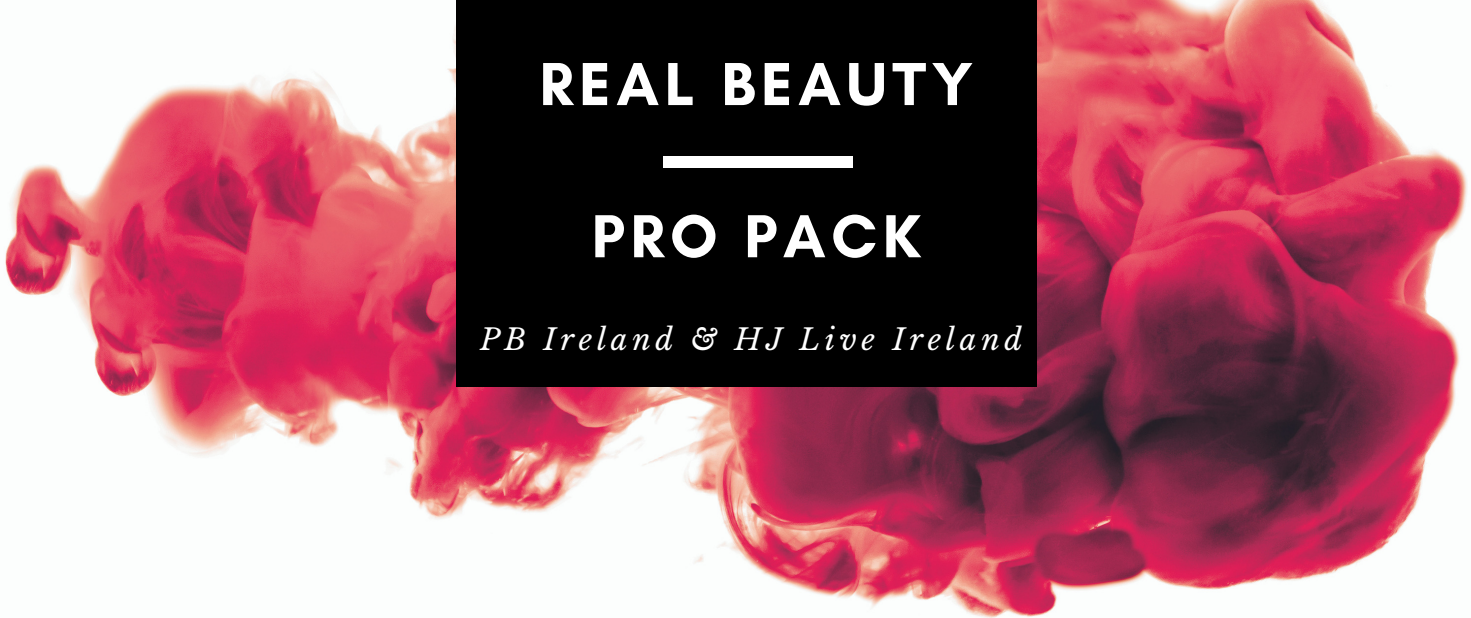


# REAL BEAUTY

## PRO PACK

*PB Ireland & HJ Live Ireland*



### **THEME: FESTIVAL LOOKS - 1 MODEL, 2 LOOKS, 3 HOURS, 4 KEY PRODUCTS**

- Complete the online form to register yourself to enter the competition – [www.professionalbeauty.ie/warpaintreg](http://www.professionalbeauty.ie/warpaintreg)
- Remember to register your model – [www.professionalbeauty.ie/model](http://www.professionalbeauty.ie/model)
- Deadline is 10am on Thursday 4th October
- Cost of entry is €25 before the deadline
- Bring a copy of your insurance and complete Model Release form [www.professionalbeauty.co.uk/modelrelease](http://www.professionalbeauty.co.uk/modelrelease)

### COMPETITION TAKES PLACE ON MONDAY 8TH OCTOBER

|                      |   |
|----------------------|---|
| <b>8:30 - 9:30</b>   | Registration                                    |
| <b>9:50 - 10:00</b>  | Briefing  |
| <b>10:30 - 13:00</b> | <b>Real Beauty - photography break at 12:00</b> |
| <b>13:30 - 14:30</b> | Photography and judging                         |
| <b>15:45 - 16:00</b> | Parade  |
| <b>16:00 - 16:30</b> | Awards Ceremony                                 |

TIME ALLOWED - 2 HOURS WITH A BREAK AFTER 90 MINUTES FOR PHOTOGRAPHY

Section 1 - 90 minutes for daytime look

Section 2 - 30 minutes for night-time look

Remember that the only prep you may do prior to the competition starting is nails. You must do your model's hair and make-up from beginning to end in the time allotted.

This category is about creating a look for real women, not a professional model, and is judged on your ability to bring out the subject's natural features, as well as application and technique. Style her to perfection from top to toe. Make sure you bring your Mood Board to show the inspiration for your work.

You will be creating Festival looks for your model. Showcase your transformation techniques and create two looks in the allotted time. Your first look is for daytime and you have 90 minutes for this, after which your model will be photographed and you will then transform the make-up to a night-time version.

**For the night-time transformation, you are permitted to selected only 4 items to work with, apart from your brushes - 1 item hair (e.g. 1 pin, 1 grip, 1 decorative accessory, etc.) and 3 make-up items (e.g. lipstick, eyeliner, blush, mascara, shadow, etc.). Please note that an eyeshadow colour is classed as one item, regardless of whether it is in a palette, quad, duo or single.**

Any age of model is permitted over the age of 16 in Real Beauty. Create a flawless, age-appropriate look, selecting products that work for her skin tone, eye and face shape. Application is key to produce a flawless finish.

You'll be judged on your ability to bring out the potential of your subject, as well as your skills in application and technique. Your mood board should include a head and shoulders shot of your model as she normally looks. Before and after shots will be compared to gauge the full effect of the final look.